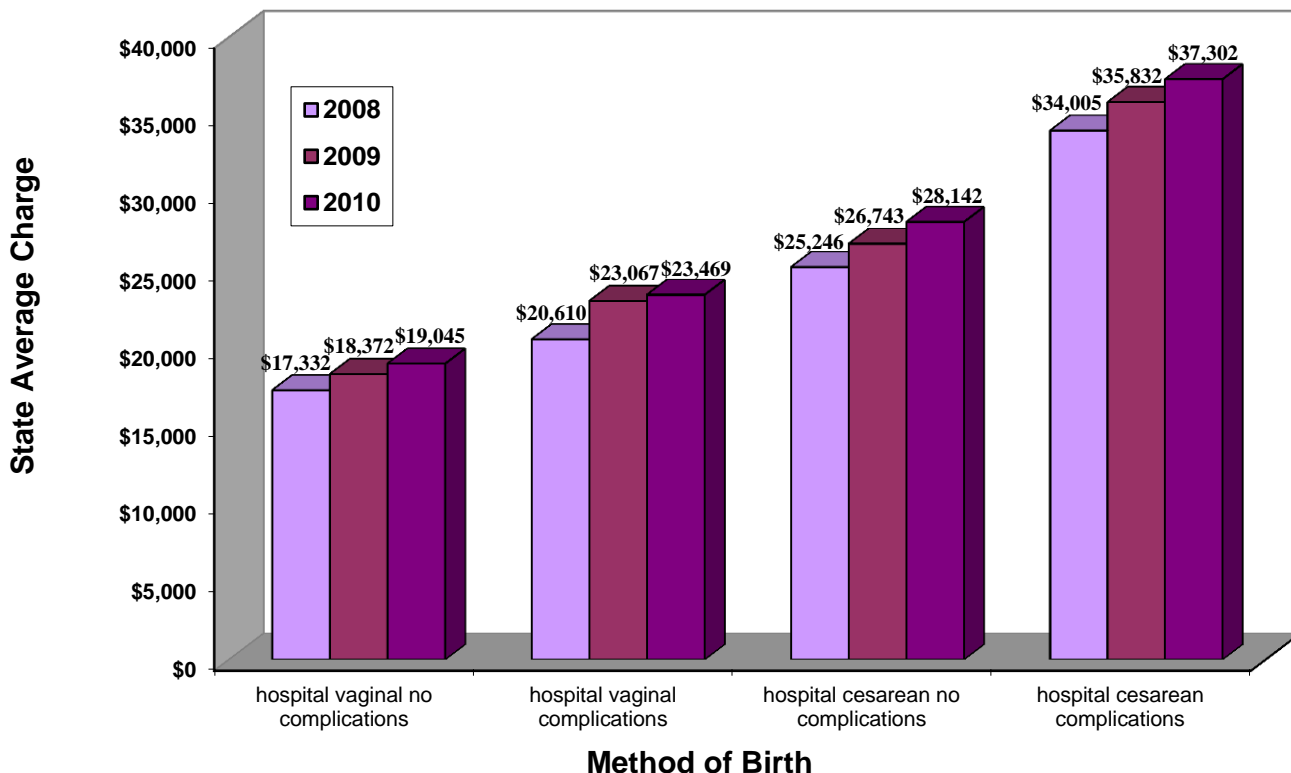


Average Facility Labor and Birth Charge By Method of Birth, New Jersey, 2008-2010



Notes: Figures in graph do not include the following:

- additional anesthesia services charge for all cesarean and most vaginal births in hospitals
- additional newborn care charge for all births in hospitals
- additional maternity provider charge for all births.

Payments of third-party payers typically reflect a discounting of charges.

Source: U.S. Agency for Healthcare Research and Quality, *HCUPnet, Healthcare Cost and Utilization Project*. Rockville, MD: AHRQ. Available at: <http://hcupnet.ahrq.gov/>

© 2012 Childbirth Connection. Download source: transform.childbirthconnection.org/resources/datacenter/